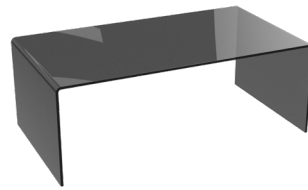
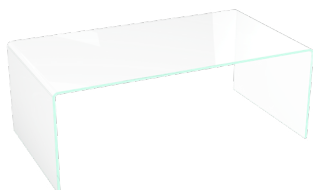
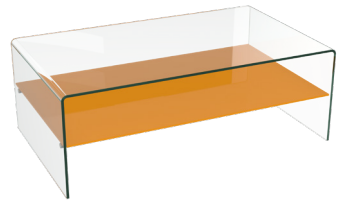
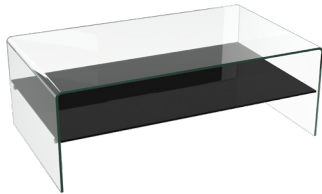
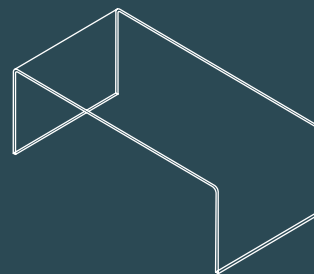
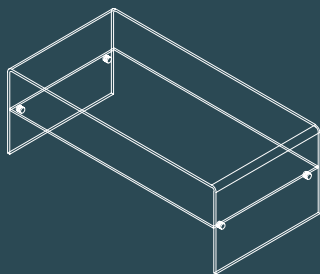


# AKANTE®

## ATENA



# ATENA



 Verre courbé à chaud haute résistance  
Epaisseur 10 mm. Étagère en verre trempé de 10 mm.

## TABLE BASSE

### CT072

Table et étagère en verre clair

Dimensions : 120 x 60 x 42 cm

Poids Net : 52,5 kg

### CT070

Table en verre Cristallin

Étagère : vaste choix de finitions

Dimensions : 113 x 66 x 40 cm

Poids Net : 49 kg

 Verre courbé à chaud haute résistance  
Epaisseur 12 mm.


## TABLE BASSE

### CT071R / CT071G

Table en Cristallin / Gris fumé

Dimensions : 110 x 60 x 40 cm

Poids Net : 34 kg

 High resistance hot bent glass  
Thickness 10 mm. Shelf 10 mm tempered glass.

## COFFEE TABLE

### CT072

Table and shelf in clear glass

Dimensions : 120 x 60 x 42 cm

Net Weight : 52,5 kgs

### CT070

Table in Crystal\* glass

Shelf : large choice of finishes

Dimensions : 113 x 66 x 40 cm

Net Weight : 49 kgs

 High resistance hot bent glass  
thickness 12 mm.

## COFFEE TABLE

### CT071R / CT071G

Table in Crystal\* glass / Tinted Grey

Dimensions : 110 x 60 x 40 cm

Net Weight : 34 kgs

 Hochbeständiges hitzegebogenes Glas Dicke: 10 mm.  
Ablagefach aus 10 mm Temperglas.

## COUCHTISCH

### CT072

Tisch- & Zwischenplatte  
aus Klarglas

Abmessung: 120 x 60 x 42 cm


Nettogewicht: 52,5 kg

### CT070

Tischplatte aus ultraklarem Glas  
Zwischenplatte: große Auswahl  
an Ausführungen

Abmessung: 113 x 66 x 40 cm

Nettogewicht: 49 kg

 Hochbeständiges hitzegebogenes Glas  
Dicke: 12 mm.

## COUCHTISCH

### CT071R / CT071G

Tischplatte aus ultraklarem Glas / Grau  
Getönt

Abmessung: 110 x 60 x 40 cm

Nettogewicht: 34 kg

\* Low iron glass