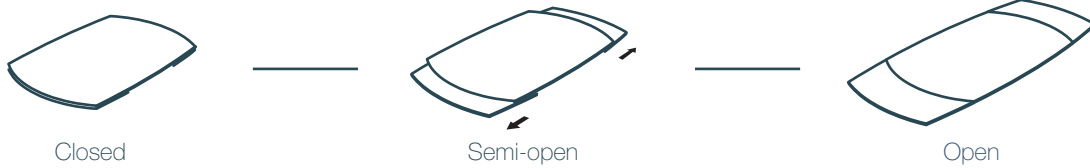


Customise your dining table



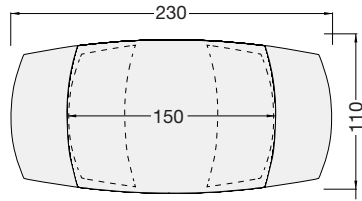
Mechanism

Manual system with independent 40 cm lateral extensions.



2 Plate dimensions

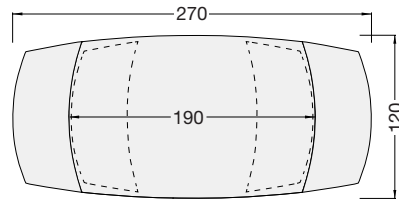
Seats 6/10



DT025

150/230 x 110 x h76 cm

Seats 8/10



DT024

190/270 x 120 x h76 cm



5 Table legs



MISSOURI DT024MC



MICHIGAN DT125MM



BRISBANE DT103CO



GOTHAM DT112MR



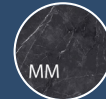
ATLAS DT052CR



DT024MD



7 Ceramic finishes



Marquina
Marble



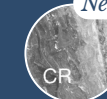
Fiorentino
Marble



Doro
Marble



Calcatta
Marble



Eramosa



Breccia*



Cremona*

*The CB and CO ceramics are only available for the DT024 tabletop

AKANTE®

www.akante.com